

Characterization of Exudative AMD in the OAKS and DERBY Phase 3 Trials of Pegcetacoplan for Geographic Atrophy

Jordi Mones, Caroline Baumal, James Wong, Preeti Joshi,
Debra Morris, Caleb Bliss, Charles Wykoff

June 10th, 2022

The Macula Society 45th Annual Meeting, Berlin, Germany

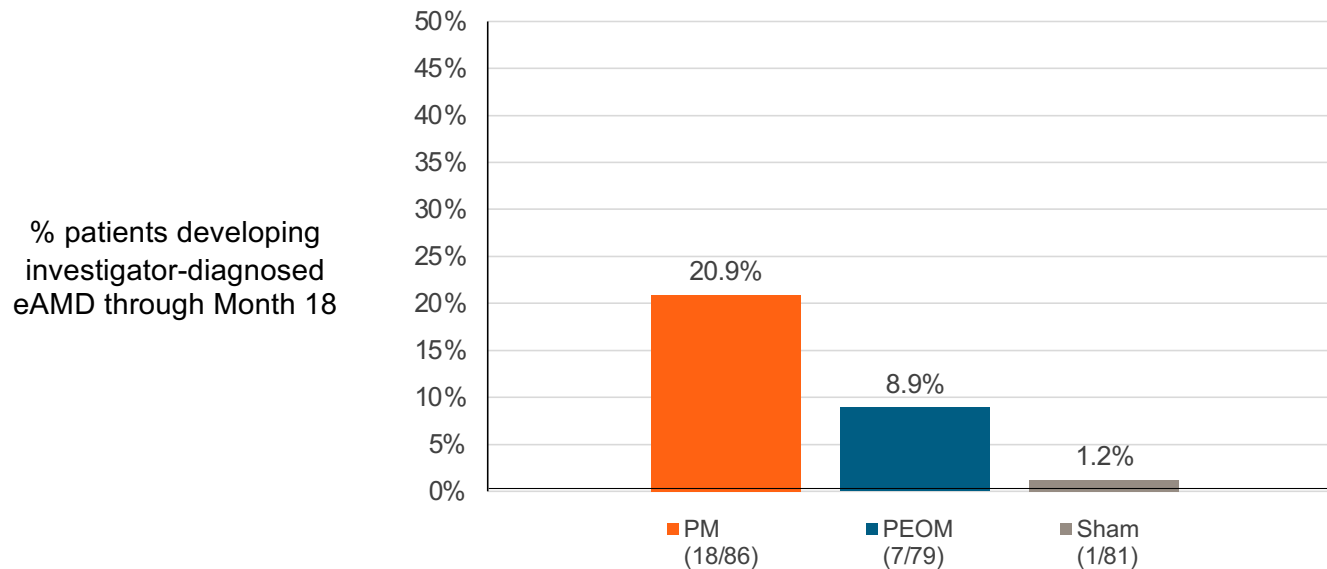


Disclosures

- Research funds: **Apellis**, Novartis, Iveric Bio, Roche, Reneuron, Kodiak Sciences and Ionis Pharmaceuticals.
- Consultant: **Apellis**, Annexon, Novartis, Iveric Bio, Roche, Reneuron, Cellcure, Eyebio, and Lineage Cell Therapeutics.
- Stock options: Iveric Bio and Notalvision.

Phase 2 FILLY study: findings of new-onset eAMD

Dose-dependent difference in rate of investigator-determined study eye eAMD



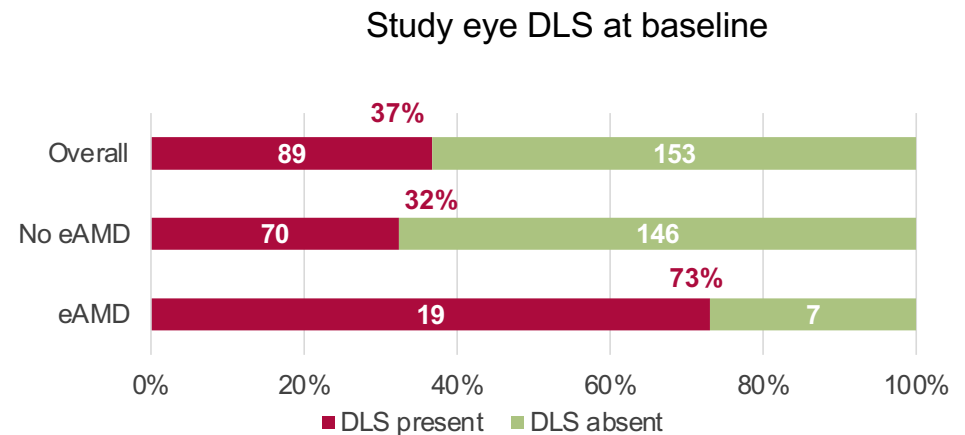
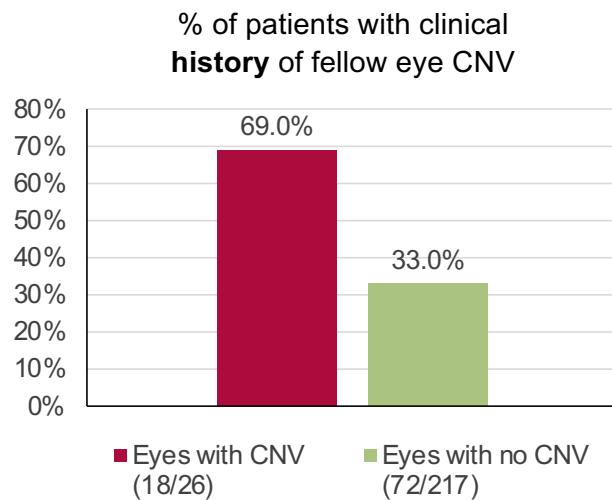
(Exudative AMD [eAMD] used in this presentation is historical terminology which includes neovascular and wet AMD)

^aData related to eAMD history in the fellow eye was available for 243 patients.

DLS=double-layer sign; eAMD=exudative age-related macular degeneration; PEOM=pegcetacoplan every other month; PM=pegcetacoplan monthly; SD-OCT=spectral domain optical coherence tomography. Wykoff CC, et al. *Ophthalmology* 2021;128:1325–36.

Phase 2 FILLY study: findings of new-onset eAMD

- Associated with greater probability of eAMD development:
 - History of fellow eye CNV (In FILLY, 90/243 [37%] enrolled patients had a history of fellow eye CNV)
 - Study eye DLS on SD-OCT



^aData related to eAMD history in the fellow eye was available for 243 patients.

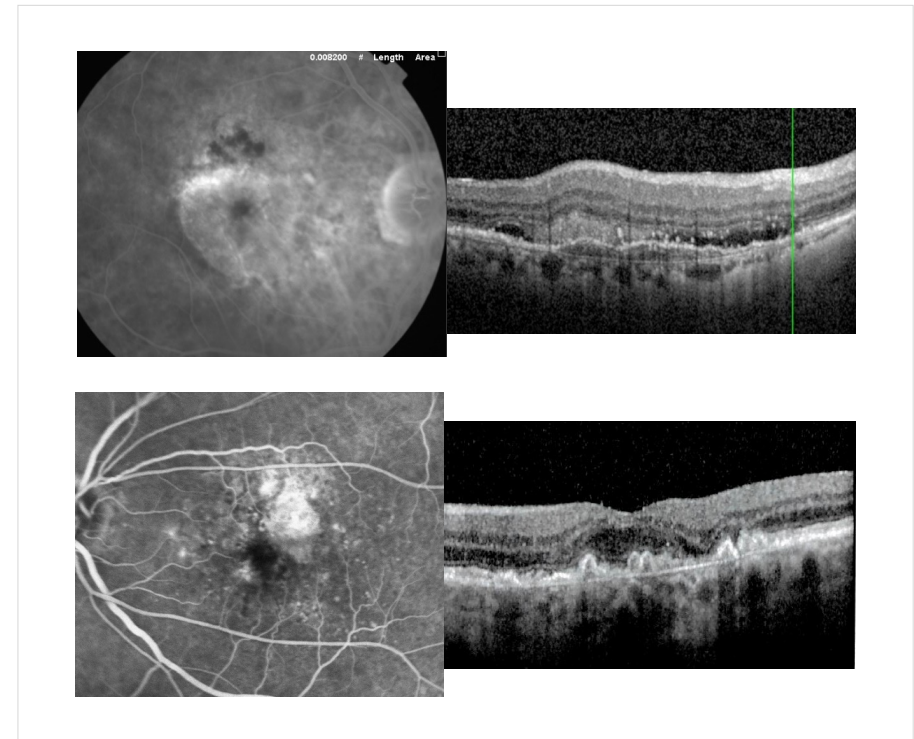
DLS=double-layer sign; eAMD=exudative age-related macular degeneration; SD-OCT=spectral domain optical coherence tomography.
Wykoff CC, et al. *Ophthalmology* 2021;128:1325–36.

FILLY post hoc analysis of CNV detected on FA at time of eAMD report

Fluorescein angiography:

Acquired in 17/26 (65%) eyes at the time of eAMD diagnosis

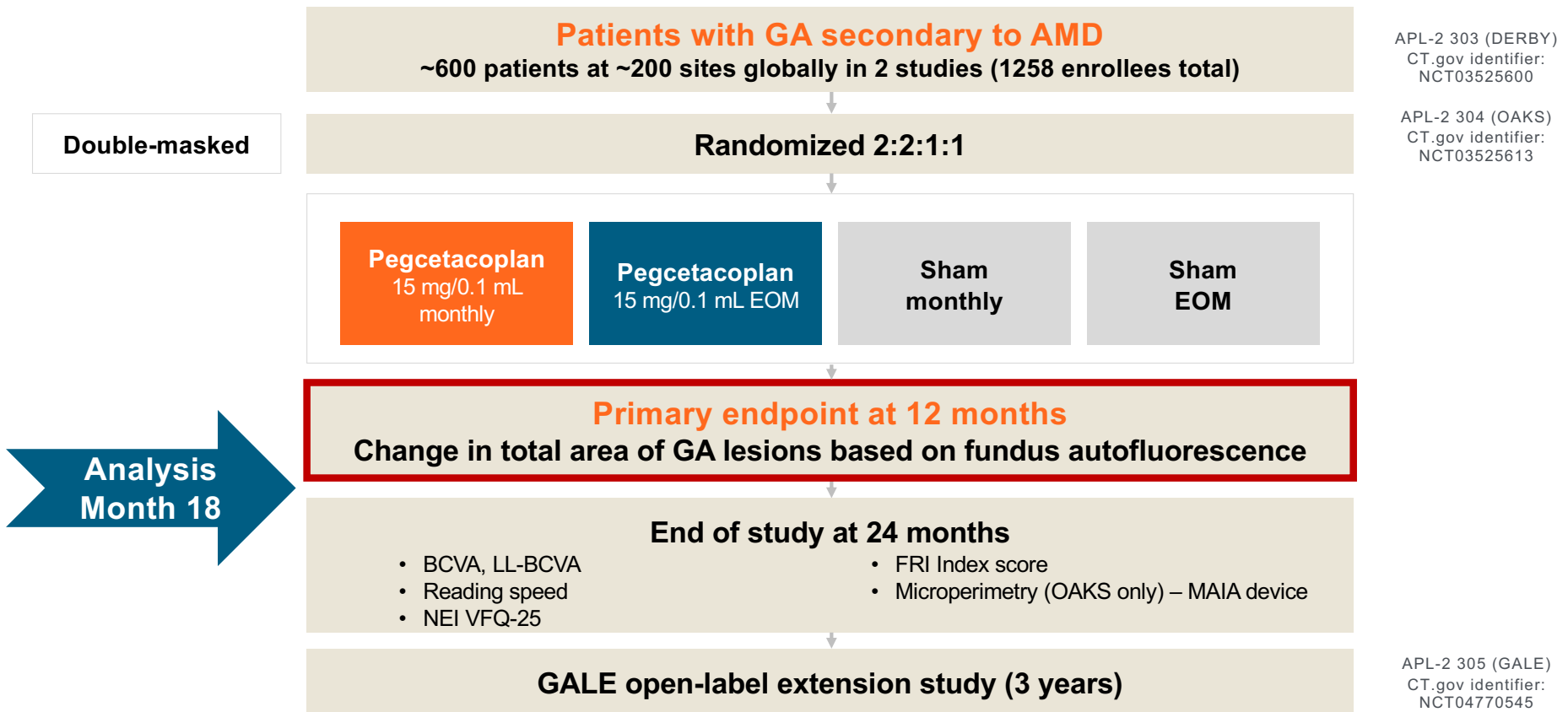
- 10 eyes had detectable CNV
 - All categorized as occult
- 7 eyes had no detectable CNV



Images graded by DARC.

CNV=choroidal neovascularization; DARC=Digital Angiography Reading Center; eAMD= exudative age-related macular degeneration; FA=fluorescein angiography.
Wykoff CC, et al. *Ophthalmology* 2021;128:1325–36.

Global Phase 3 program: Design of studies (OAKS and DERBY)



AMD=age-related macular degeneration; BCVA=best corrected visual acuity; EOM=every other month; FRI=functional reading independence; GA=geographic atrophy; LL=low luminance; MAIA=Macular Integrity Assessment; NEI-VFQ=National Eye Institute Visual Function Questionnaire-25.

Phase 3 program: Relevant ocular inclusion and exclusion criteria



- Fellow eye
 - History of fellow eye CNV not exclusionary
 - Across OAKS and DERBY study arms, between 18–21% of patients had fellow eye CNV history at baseline
- Study eye
 - Any history of or evidence of exudative CNV was exclusionary
 - Patients with DLS were not excluded
 - Across OAKS and DERBY study arms, between 14–20% of patients had study eye DLS present at baseline

Investigator-reported events of eAMD through Month 18^a



	OAKS			DERBY		
	PM (N=213)	PEOM (N=212 ^b)	Sham Pooled (N=211)	PM (N=206)	PEOM (N=208)	Sham Pooled (N=206)
Patients with study eye investigator-determined new-onset eAMD, n (%)	16 (7.5%)	15 (7.1%)	4 (1.9%)	24 (11.7%)	11 (5.3%)	8 (3.9%)
COMBINED STUDIES						
			PM (N=419)	PEOM (N=420 ^b)	Sham Pooled (N=417)	
Investigator-determined new-onset eAMD, n (%)			40 (9.5%)	26 (6.2%)	12 (2.9%)	

- Patients who developed eAMD continued treatment with pegcetacoplan and received anti-VEGF therapy at the discretion of the investigator

^aEvents include preferred terms of choroidal neovascularization and neovascular AMD.

^bOne patient had CNV on medical history in study eye and is not counted in the denominator for this analysis. 211 patients were at risk of new-onset eAMD.

AE=adverse event; AMD=age-related macular degeneration; CNV=choroidal neovascularization; eAMD=exudative AMD; n=number of patients; PEOM=pegcetacoplan every other month; PM=pegcetacoplan every month.

Investigator-reported events of eAMD through Month 18 by baseline fellow eye CNV and baseline study eye DLS status^a



COMBINED STUDIES	PM	PEOM	Sham Pooled
eAMD n/N (%), fellow eye CNV present	8/84 (9.5%)	8/81 (9.9%)	7/86 (8.1%)
eAMD n/N (%), fellow eye CNV absent	32/335 (9.6%)	18/338 (5.3%)	5/331 (1.5%)

COMBINED STUDIES	PM	PEOM	Sham Pooled
eAMD n/N (%), study eye DLS present	8/79 (10.1%)	6/73 (8.2%)	0/63 (0%)
eAMD n/N (%), study eye DLS absent	32/336 (9.5%)	20/345 (5.8%)	11/349 (3.2%)

^aEvents include preferred terms of choroidal neovascularization and neovascular AMD.

AE=adverse event; AMD=age-related macular degeneration; eAMD=exudative AMD; FA=fluorescein angiography; CNV=choroidal neovascularization; DLS: double layer sign; n=number of patients; PEOM=pegcetacoplan every other month; PM=pegcetacoplan every month.

Cases of eAMD in fellow eyes through 18 months^a



	OAKS			DERBY		
	PM (N=213)	PEOM (N=212)	Sham Pooled (N=211)	PM (N=206)	PEOM (N=206)	Sham Pooled (N=206)
Patients without baseline fellow eye CNV, N	168	173	167	167	166	164
Patients with new onset fellow eye eAMD, n (%)	8 (4.8%)	5 (2.9%)	7 (4.2%)	4 (2.4%)	8 (4.8%)	6 (3.7%)

COMBINED STUDIES	PM (N=419)	PEOM (N=420)	Sham Pooled (N=417)
Patients without baseline fellow eye CNV, N	335	339	331
Investigator-determined new-onset eAMD, n (%)	12 (3.6%)	13 (3.8%)	13 (3.9%)

^aEvents include preferred terms of CNV and neovascular AMD.

AMD=age-related macular degeneration; CNV=choroidal neovascularization; eAMD=exudative AMD; N=number of patients; PEOM=pegcetacoplan every other month; PM=pegcetacoplan every month;

Characteristics of Investigator-reported eAMD events through Month 18^a



COMBINED STUDIES	PM (N=26)	PEOM (N=21)	Sham Pooled (N=11)
CNV type on FA at eAMD study visit			
Classic, n (%)	1 (3.8%)	1 (4.8%)	0
Occult, n (%)	22 (84.6%)	20 (95.2%)	10 (90.9%)
Classic + occult, n (%)	0	0	0
Active leakage with low likelihood of CNV, n (%)	3 (11.5%)	0	1 (9.1%)

- Table includes events with available reading center determination of CNV type on FA at time of eAMD study visit
- All patients had evaluable SD-OCT at time of eAMD study visit; majority of events showed no subretinal fluid

^aEvents include preferred terms of choroidal neovascularization and neovascular AMD. Events with no available reading center determination of CNV type on FA at time of eAMD are not included here.

AMD=age-related macular degeneration; CNV=choroidal neovascularization; eAMD=exudative AMD; FA=fluorescein angiography; SD-OCT=spectral domain optical coherence tomography; n=number of patients; PEOM=pegcetacoplan every other month; PM=pegcetacoplan every month.

Conclusions



- Definitions of eAMD were exactly the same across FILLY, DERBY, and OAKS; all adverse events of eAMD are reported*
- In DERBY and OAKS pooled, 9.5%, 6.2%, and 2.9% of patients in the combined PM, PEOM, and sham groups experienced new-onset investigator-determined eAMD over 18 months
 - The majority of eAMD events with available images at time of exudation were classified as occult (type 1 MNV) by the reading center
- Final 24-month results are expected in Q3 2022

*Preferred terms of neovascular AMD + CNV
AMD=age-related macular degeneration; CNV=choroidal neovascularization; ; eAMD=exudative AMD; PEOM=pegcetacoplan every other month;
PM=pegcetacoplan every month..